



URC iRoom module integration guide

Installing the module into URC Accelerator

1. Extract the files from the zip and copy the .tcm file to your custom driver folder.
2. Import the tcm: File – Import tcm files – find the iRoom.tcm file and click ok. When the pop-up message appears, click OK, then restart Accelerator.
3. In Accelerator step 4, select 'My Database' – IP and AUX. The module will appear under iRoom Dock.
4. In step 6, configure the IP address of the dock. Please make sure that the dock is set to either a static IP address, or has a Mac reservation in the router so that its IP address does not change. Set the port to 13601 unless it has been changed in the configuration of the iRoom dock.

TCL Commands

Select the TCL command icon in the macro window. Choose which command is appropriate for that macro. Your choices are:

Beep:

Makes the dock beep for the selected amount of time. Choose from 0.1-10 seconds.

Operate Dock

Set the dock to open / close / toggle.

Operate Home Button

Set the LED level of the Home Button. (0-100%)

Operate Buttons

Set the LED level of the LED buttons. (0-100%)

Operate Relay

Set the relay to open / close / toggle.

Get Plugdrive status*

Retrieve the status of the plugdrive. to store into a variable.

Will return any of: docked / undocked / docking / undocking.

Get Clackdrive status*

Retrieve the status of the clackdrive. to store into a variable.

Will return any of: opening / opened / closing / closed.

Get Dock State*

Retrieve the status of the plugdrive to store into a variable.

Will return any of: docked / undocked / docking / undocking.

Get Relay State*

Retrieve the status of the relay to store into a variable.

Will return either of: opened / closed

Reboot Dock

Reboots the iRoom dock

Example: this will give you the logic to do different actions depending on whether the iPad is in the dock:

2-Way Module Command

Name :
get dock

Available Devices :
DOCK [f]

Available Command :
Get Dock State

Parameters

Description
Get the status of the dock. Will return docking

Prev Next

Result

☒ Save the result

Variable : dockState Create Variable

OK Cancel

IF Setting

Type

☐ True ☐ Press Time ☒ Variable ☐ Sensor

☐ Relay ☐ 12V ☐ Thermostat

dackState
dockState
relayState

Add New

True/False Integer Integer[Min/Max] String

Type

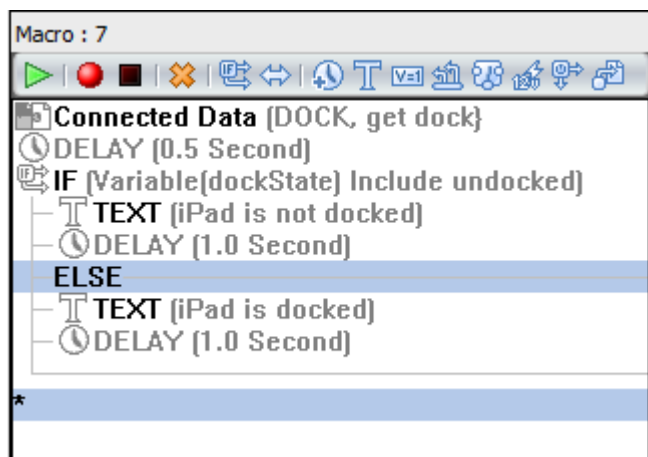
☒ Ascii ☐ HEX ☐ Decimal

Value

docked

Compare Include

OK Close



Device Events

You can trigger macros in other devices by reacting to the following events in the iRoom dock:

Home Button

React to either the press or release of the home button.

Quick Access Button

React to either the press or release of one of the quick access buttons.

Digital Inputs

React to a change in the digital inputs.

Proximity Sensor

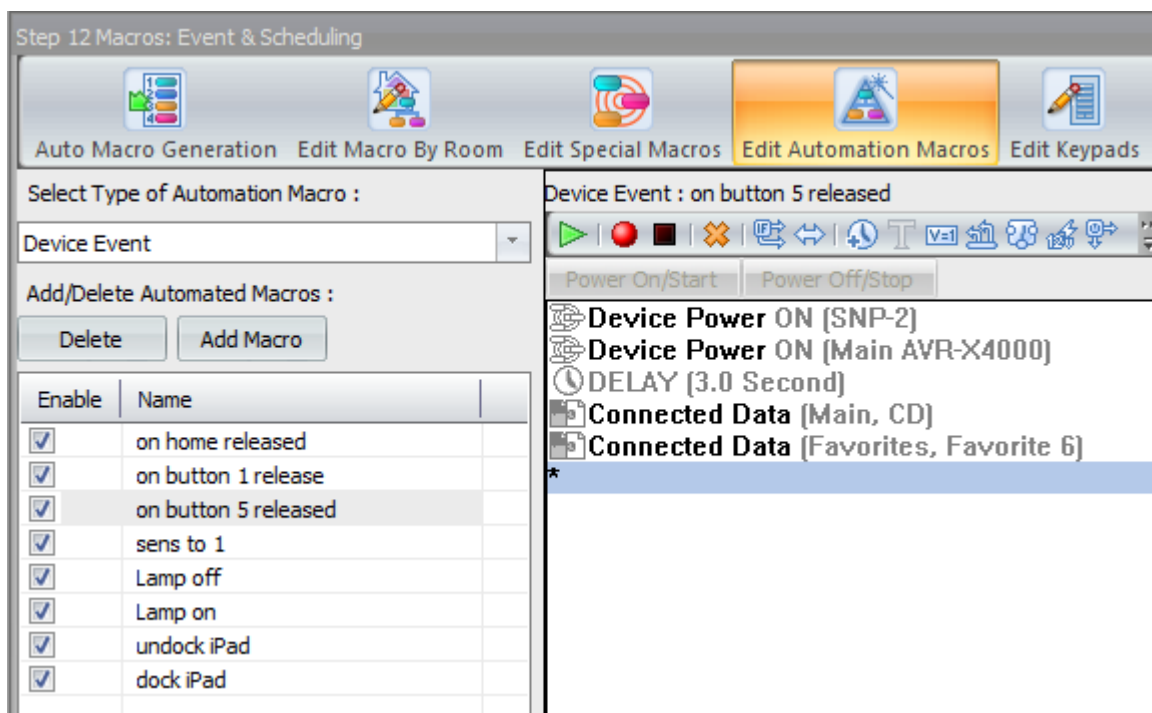
React to activation (1)/ deactivation (0) of the proximity sensor.

iPad action

React to the iPad being docked / undocked from the iRoom dock.

Example: reacting to the release of button 5:

The screenshot shows a software interface titled "Edit Automated Settings". It is divided into two main sections. The left section contains three dropdown menus: "Name :" with the value "on button 5 released", "Available Devices :" with the value "DOCK [f]", and "Available Event :" with the value "Quick Access Button". The right section, titled "Parameters", contains two dropdown menus: the first is set to "released" and the second is set to "5". Below these is a "Description" field containing the text "React to quick button action.". At the bottom of the "Parameters" section are "Prev" and "Next" buttons. At the very bottom of the dialog are "OK" and "Cancel" buttons.



Therefore, button 5 will trigger a favourite from the SNP-2, while also setting the Denon AVR to the correct input.

* Please note, once the program has been downloaded you will need to manually operate the dock once in order for the module to acquire all the status details from it.